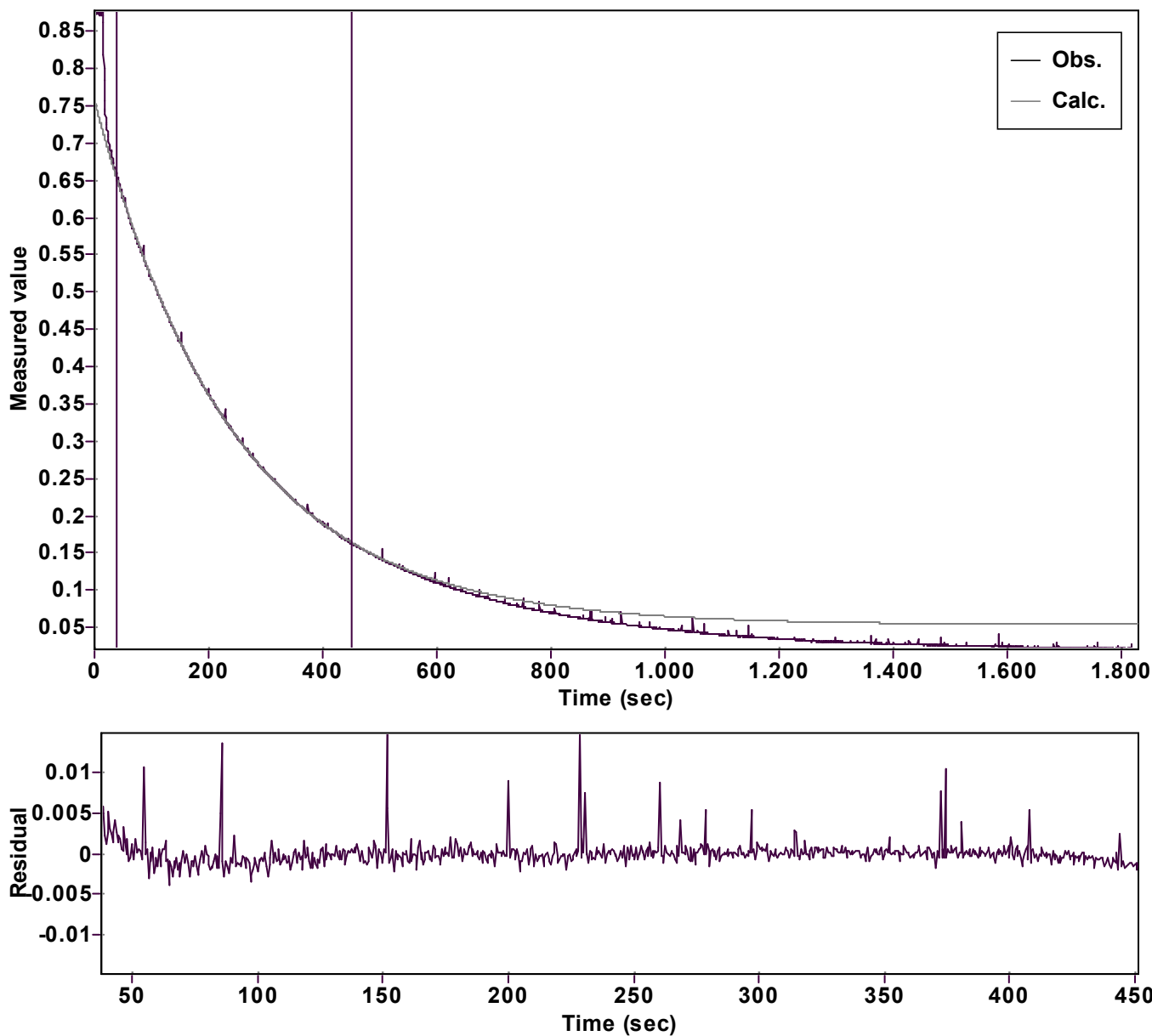


Evaluation of kinetic data with ExpoFit V 1.3

Graph



Function: y = A exp (-kx) + C (Exponential decrease)		Reference point: 0 (Zero)	
Amp A = 0.702295960702021 Â± 0.000368481420142		Quality r ² = 0.9998727276455	
Rate k = 0.004106799635575 Â± 0.000007841365234		Data points = 829 of 3661	
Final C = 0.053631750810966 Â± 0.000543150802938		Conversion = 56.6 %	
Start at position: 37.5 / 0.65891 (24.9 %)		End at position: 451.501 / 0.16244 (81.5 %)	
ExpoFit file: Vinylazide_50 equiv_pfa+Nu_c01_000 (Data-ExtracDate of file: exp16/10/2025 22:26:28			
Source file: Vinylazide_50 equiv_pfa+Nu_c01_000 (Data-ExtracDate of file: txt 25/08/2025 15:03:00			
Type of source file: Universal ASCII - file data			
2007 by Dr. Kempf		Date of print: 16/10/2025 22:32:51	